



**GEKA® plus:
When good is not
good enough.**



GEKA® plus quick couplings: The robust range for all applications.

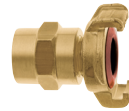


GEKA® plus

The original – easy to couple,
operating pressure of up to 40 bar



GEKA® plus K
for drinking water
DVGW certification



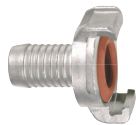
GEKA® plus XK
for drinking water
For a hygienic hose bonding



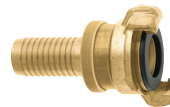
GEKA® plus E stainless steel
Resistant to rusts, acids and alkalis



GEKA® plus Z
For a hose bonding without tools



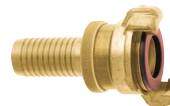
GEKA® plus EK stainless steel
for drinking water
and the food industry



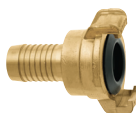
GEKA® plus SH
Secured against becoming loose



GEKA® plus P plastic
Extra lightweight



GEKA® plus SHK
for drinking water
Secured against becoming loose



GEKA® plus 360
360° rotatable on its axis;
prevents the hose from twisting



GEKA® plus SDP
Extra lightweight;
secured against becoming loose

GEKA® plus quick coupling - The Original



The classic model among the GEKA® plus quick couplings withstands an operating pressure of up to 40 bar with ease. According to the GEKA® system, this is more than double the operating pressure when compared with conventional claw couplings.

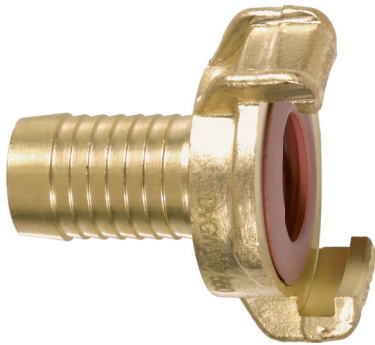
- Area of application: Water, industrial, suction and pressure hoses
- Operating temperature range: Approx. -5 °C to +100 °C (depending on the sealing ring quality)

THE PLUS:

Easy to couple,
operating pressure
of max. 40 bar



GEKA® plus quick coupling K for drinking water



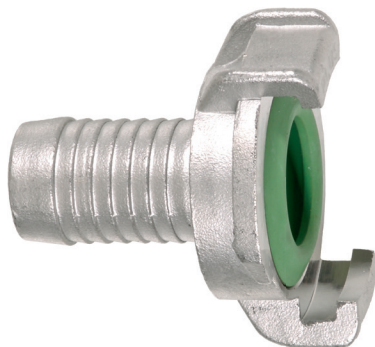
The GEKA® plus K quick coupling complies with the German drinking water ordinance (DVGW testing specification).

- Area of application: Public events, such as fairs and outdoor events
- Operating temperature range: Approx. -5 °C to +100 °C (depending on the sealing ring quality)

THE PLUS:
For drinking water



GEKA® plus quick coupling E stainless steel



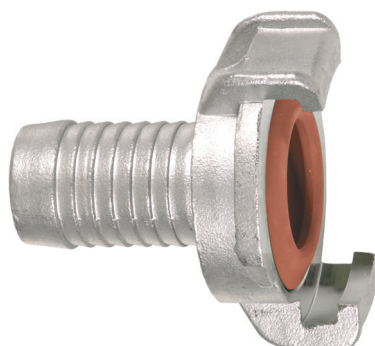
The stainless steel GEKA® plus quick coupling is resistant to rust, acids and alkalis.

- Area of application: The chemical, beverage, and pharmaceutical industries, as well as environmental protection, etc.
- Operating temperature range: Approx. -5 °C to +100 °C (depending on the sealing ring quality)

THE PLUS:
Resistant to rust,
acids and alkalis



GEKA® plus quick coupling EK for drinking water stainless steel



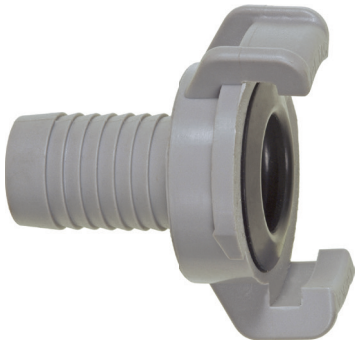
The stainless steel GEKA® plus EK quick coupling for drinking water meets the DVGW VP550 testing specification and complies with the German drinking water ordinance.

- Area of application: The drinking water and beverage industries and public events, such as fairs and outdoor events
- Operating temperature range: Approx. -10 °C to +100 °C (depending on the sealing ring quality)

THE PLUS:
For drinking water
and the food
industry



GEKA® plus quick coupling P plastic



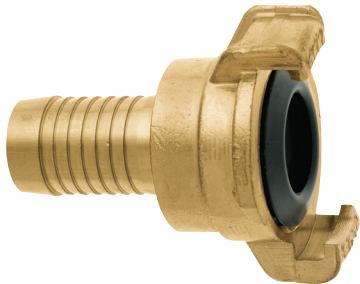
The plastic GEKA® plus quick coupling P made from glass fibre reinforced plastic PA is particularly lightweight. It boasts impressively high resistance to wear, abrasion and breaking.

- Area of application: Water, suction and pressure hoses in industry, construction and agriculture, horticulture and home water systems
- Operating pressure: Max. 15 bar
- Operating temperature range: Approx. -10 °C to +100 °C (depending on the sealing ring quality)

THE PLUS:
Extra lightweight



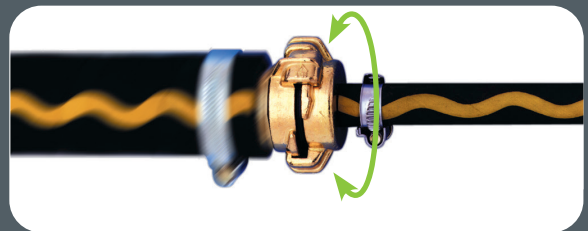
GEKA® plus quick coupling 360



The GEKA® plus 360 quick coupling can be fully rotated around its axis. This effectively prevents the hose from twisting, protects the hose and improves safety.

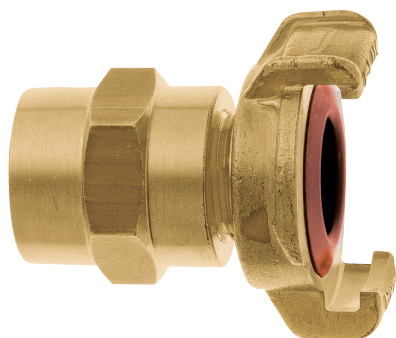
- Area of application: Mechanical, plant, unit, vehicle, tool and pump engineering, building construction and civil engineering, horticulture and landscaping, agriculture, plumbing and fitting industries, home and garden, etc.
- Operating temperature range: Approx. -5 °C to +100 °C (depending on the sealing ring quality)

THE PLUS:
Rotatable grommet – prevents hose twisting



Easy turning of the hose grommets and/or threaded connections (internal and external) under pressure or suction load.

GEKA® plus quick coupling XK for drinking water

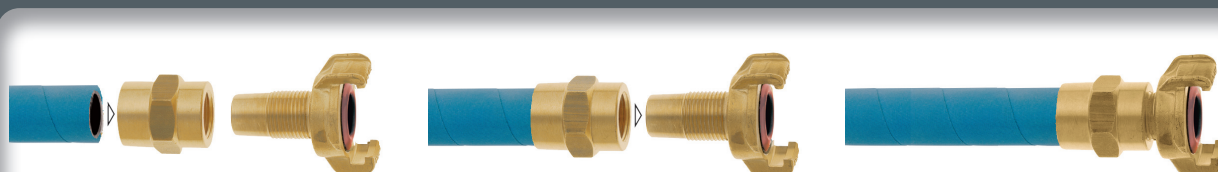


Thanks to the screw-on hose fitting, the GEKA® plus XK quick action coupling for drinking water is easy to assemble, without the need for a pressing tool.

- Area of application: High-quality drinking water, water, industrial, suction and pressure hoses at public events
- Operating temperature range: Approx. -5 °C to +100 °C (depending on the sealing ring quality)
- Complies with the German drinking water ordinance: Meets the DVGW VP550 testing specification

THE PLUS:

For a hygienic hose bonding



Easy assembly without the need for an expensive pressing tool (a wrench will suffice).

GEKA® plus quick coupling Z

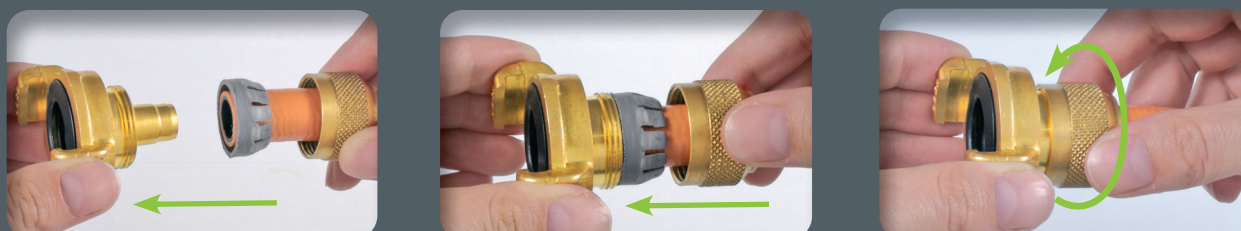


The GEKA® plus quick coupling Z has a two-piece screw-on hose socket which can be used for a wide range of hoses.

- Operating temperature range: Approx. -5 °C to +100 °C (depending on the sealing ring quality)

THE PLUS:

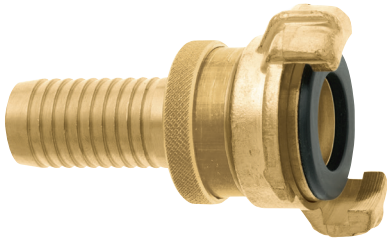
For a hose bonding without tools



Easy assembly. No risk of injury due to sharp edges.



GEKA® plus suction and high-pressure coupling SH



The GEKA® plus SH suction and high-pressure coupling is an ideal solution for all hose lines. It is secured against becoming loose and completely sealed when in a non-pressurised state thanks to safety nubs and screw rings.

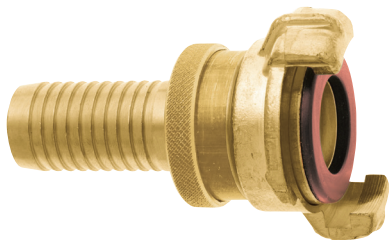
- Areas of application: For water, suction and high-pressure hoses, pressure and pumping equipment, etc. In industry, construction and agriculture, horticulture and home water systems
- Operating pressure: Max. 50 bar

THE PLUS:

Secured against becoming loose



GEKA® plus suction and high-pressure coupling SHK for drinking water



The GEKA® plus SHK suction and high-pressure coupling for drinking water complies with the German drinking water ordinance and is ideal for high pressure applications.

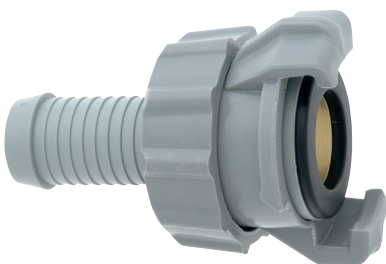
- Area of application: Suction and pressure hoses at public events such as fairs, outdoor events, etc.
- Meets the DVGW VP550 testing specification, with a DVGW type examination certificate

THE PLUS:

For drinking water, secured against becoming loose



GEKA® plus suction and pressure coupling SDP



The GEKA® plus SDP suction and pressure coupling is secured against becoming loose by safety nubs and screw rings. In addition, it is completely sealed when in a non-pressurised state.

- Area of application: Water, suction and pressure hoses, pressure and pumping equipment, respiratory equipment, etc. In industry, construction and agriculture, horticulture and home water systems
- Operating pressure: Max. 15 bar

THE PLUS:

Extra lightweight, secured against becoming loose



Contact us:

For competent advice:

Export:

A / CH / LI	+49 7191 34 52 - 148
Other export countries	- 118

Service:

Technical Support	- 172
Order Management	- 139

Opening hours:

Monday - Friday	7:00am - 12:00pm 1:00pm - 4:00pm
-----------------	-------------------------------------

24/7



+49 7191 34 52 - 100



www.geka.de



info@geka.de



www.geka-profi-shop.de

Fast and simple ordering:

by FAX: +49 7191 34 52 - 100
by e-Mail: info@geka.de
GEKA® Professional-Shop: www.geka-profi-shop.de

EDI transmission also possible





KARASTO Armaturenfabrik Oehler GmbH
Manfred-von-Ardenne-Allee 27
71522 Backnang | Germany

 +49 7191 34 52 - 0
 +49 7191 34 52 - 100
 info@geka.de
 www.geka.de/en

The brand GEKA® is a registered trademark of the company KARASTO Armaturenfabrik Oehler GmbH, Germany.